

Lektorat

Methodical in rationale and irrepressible in function, Lektorat's 48 styles are the embodiment of editorial expression.

DESIGNED BY

Florian Fecher

YEAR

2020

Florian Fecher's Lektorat font family is one for the books, and for the screens, and for the magazines. While an editorial's main goals are to entertain, inform, and persuade, more should be considered. For example, clear divisions are necessary, not just from one article to the next, but in how each is positioned as op-ed or fact-based, infographic or table, vilifying or uplifting. From masthead to colophon, Lektorat has six concise text styles and 42 display styles to captivate, educate, and motivate within any editorial purpose.

Magazines and related publications are notoriously difficult to brand and then to format accordingly. The research behind Lektorat focused on expression versus communication and what it takes for a great typeface to accomplish both tasks. In the changeover from the 19th to 20th century, German type foundry Schelter & Giesecke published several grotesque families that would become Lektorat's partial inspiration. Experimentation with concepts from different exemplars gave birth to Lektorat's manifest character traits: raised shoulders, deep incisions within highly contrasted junctions, and asymmetrical counters in a sans family.

After thoroughly analysing magazine publishing and editorial designs, Florian discovered that a concise setup is sufficient for general paragraph text.

So Lektorat's text offering is concentrated into six total styles: regular, semibold, and bold with their obliques. Stylistic sets are equally minimal; an alternate 'k, K' and tail-less 'a' appear in text only. No fluff, no wasted "good intentions", just a laser-like suite to focus the reader on the words.

The display styles are another matter. They aim to attract attention in banners, as oversized type filling small spaces, photo knockouts, and in subsidiary headings like decks, callouts, sections, and more. For these reasons, three dialed-in widths — Narrow, Condensed, and Compressed — complete the display offerings in seven upright and oblique styles each, flaunting 42 headlining fonts in total. If being on font technology's cutting edge is more your goal, the Lektorat type family is optionally available in four small variable font files for ultimate control and data savings.

The Lektorat typeface was forged with a steel spine for pixel and print publishing. It unwaveringly informs, convincingly persuades, and aesthetically entertains when appropriate. Its sans serif forms expand in methodical ways until the heaviest two weights close in, highlighting its irrepressible usefulness to the very end. Lektorat is an example of how much we relish entering into an agreed battle of persuasion — one which both sides actually enjoy.

 STATIC STYLES

Text Regular
Text Oblique
 Text Semibold
Text Semibold Oblique
 Text Bold
Text Bold Oblique

 STATIC STYLES

Compressed Extralight *Oblique*
 Compressed Light *Oblique*
 Compressed Regular *Oblique*
 Compressed Semibold *Oblique*
 Compressed Bold *Oblique*
 Compressed Extrabold *Oblique*
 Compressed Black *Oblique*

Condensed Extralight *Oblique*
 Condensed Light *Oblique*
 Condensed Regular *Oblique*
 Condensed Semibold *Oblique*
 Condensed Bold *Oblique*
 Condensed Extrabold *Oblique*
 Condensed Black *Oblique*

Narrow Extralight *Oblique*
 Narrow Light *Oblique*
 Narrow Regular *Oblique*
 Narrow Semibold *Oblique*
 Narrow Bold *Oblique*
 Narrow Extrabold *Oblique*
 Narrow Black *Oblique*

 VARIABLE STYLES

Text Regular <-> **Bold**
Text Oblique <-> **Bold Oblique**

Compressed <-> **Narrow**
 Extralight <-> **Black**

Compressed Oblique <-> **Narrow Oblique**
Extralight Oblique <-> **Black Oblique**

			SET 1 LEKTORAT DISPLAY	SET 1 LEKTORAT TEXT	FULL BUNDLE + VARIABLE FONT
DISPLAY	COMPRESSED	UPRIGHTS	<input checked="" type="checkbox"/>		<input checked="" type="checkbox"/>
		OBLIQUES	<input checked="" type="checkbox"/>		<input checked="" type="checkbox"/>
	CONDENSED	UPRIGHTS	<input checked="" type="checkbox"/>		<input checked="" type="checkbox"/>
		OBLIQUES	<input checked="" type="checkbox"/>		<input checked="" type="checkbox"/>
	NARROW	UPRIGHTS	<input checked="" type="checkbox"/>		<input checked="" type="checkbox"/>
		OBLIQUES	<input checked="" type="checkbox"/>		<input checked="" type="checkbox"/>
TEXT	UPRIGHTS			<input checked="" type="checkbox"/>	<input checked="" type="checkbox"/>
	OBLIQUES			<input checked="" type="checkbox"/>	<input checked="" type="checkbox"/>

Variable fonts are a new part of OpenType technology that allows typeface creators to design fonts, and users to organise and use them, in a more advanced way than was done in the past.

Rather than having one individual font style per font file (i.e., extralight, regular, bold, or extrabold), variable fonts are one file with almost infinite choices within a single “designspace”, the total boundaries for a typeface’s appearance.

So what’s a designspace? A designspace is the total area containing all axes which the font user can customise: weight, width, serif length, optical size, and more. A series of sources (or masters or exemplars)

determine the appearance of all lettershape at certain positions on each axis.

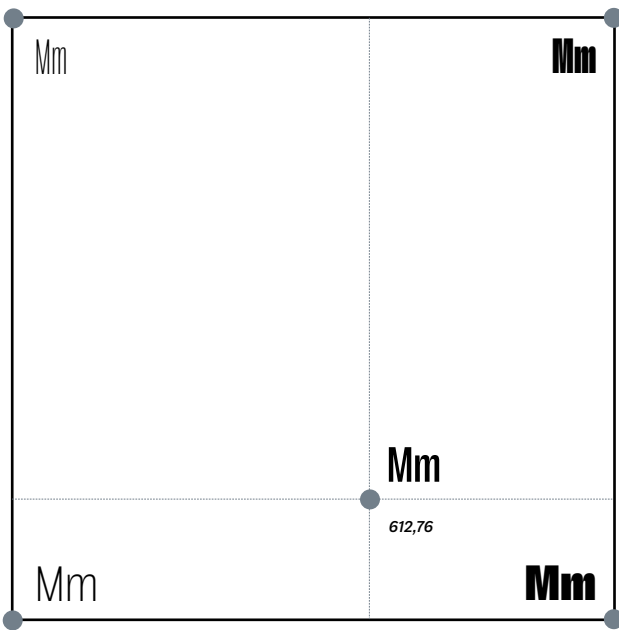
Imagine a designspace like a chess board grid with sources lining the edges. Opposite sources usually have opposing characteristics, like extralight versus extrabold. A move in any direction affects the look of the font since the movement brings it closer to one source or another. The closer to one source, the more it will look like that one and the less it will look like the opposite source. So moving in the designspace always causes a change in the look of the font. The final characteristics of the font are defined by the total proximity to all exemplars — where it is located within the total designspace.

To get a more accurate picture, now imagine that this grid is not two-dimensional, but is a three-dimensional cube; it has depth, meaning the font creator has defined more than two axes. The user is able to move through that cubed designspace, and as they do the font changes in accordance with how close it is to the sources that have defined its look.

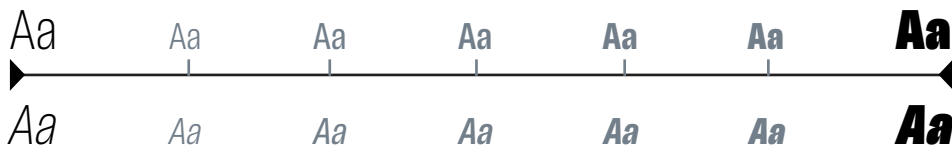
Thanks to variable font technology, this means graphic designers and web developers can use mathematically generated styles that, while never actually drawn by the font creator, still exist within that total designspace. And the file size is just a fraction of what normal font files are. This is great news for developers, for data use on mobile, for rendering, and for prioritising speed and responsiveness — not to mention creativity!

In a few cases, when some glyphs cannot smoothly transition across the spectrum of instances, a modification called a “jump” is included. Currently not all software responds to variable fonts in the same way.

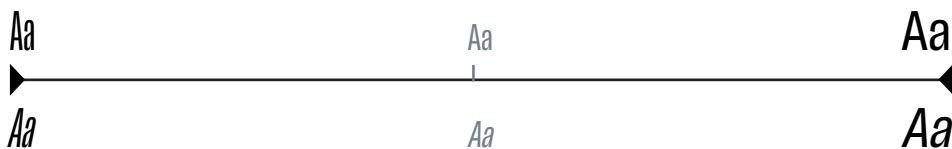
DESIGN SPACE



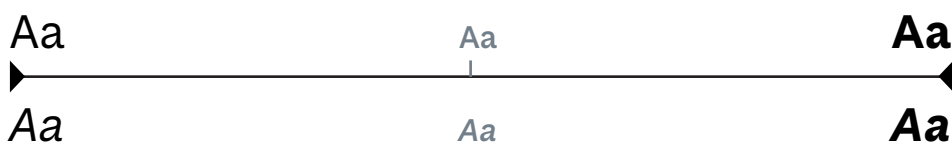
WEIGHT AXIS (FROM EXTRALIGHT TO EXTRABOLD)



WIDTH AXIS (FROM COMPRESSED TO NARROW)



WEIGHT AXIS (FROM TEXT REGULAR TO TEXT BOLD)



Green spaces

Jardín vertical

Ökosystem

Editorial

Humboldt

Architectural

Navpiční vrt

Magazines

ARCHITECTURAL Humboldtthain

Brunnenstraße 13357 — Berlin, Germany

Made for magazines

Énergie marémotrice: l'Eau, la Lune & le Soleil.

SOLAR

Qëndrueshmëria

Sustainable architecture receives international 2020 award

Lektorat

Display

COMPRESSED EXTRALIGHT 72PT

Murciélago

COMPRESSED LIGHT 72PT

Murciélago

COMPRESSED REGULAR 72PT

Murciélago

COMPRESSED SEMIBOLD 72PT

Murciélago

COMPRESSED BOLD 72PT

Murciélago

COMPRESSED EXTRABOLD 72PT

Murciélago

COMPRESSED BLACK 72PT

Murciélago

CONDENSED EXTRALIGHT 72PT

Murciélago

CONDENSED LIGHT 72PT

Murciélago

CONDENSED REGULAR 72PT

Murciélago

CONDENSED SEMIBOLD 72PT

Murciélago

CONDENSED BOLD 72PT

Murciélago

CONDENSED EXTRABOLD 72PT

Murciélago

CONDENSED BLACK 72PT

Murciélago

NARROW EXTRALIGHT 72PT

Murciélago

NARROW LIGHT 72PT

Murciélago

NARROW REGULAR 72PT

Murciélago

NARROW SEMIBOLD 72PT

Murciélago

NARROW BOLD 72PT

Murciélago

NARROW EXTRABOLD 72PT

Murciélago

NARROW BLACK 72PT

Murciélago

COMPRESSED BLACK 55PT

Rhythm & Reaction

COMPRESSED BLACK 50PT

Rhythm & Reaction

COMPRESSED BLACK 45PT

Rhythm & Reaction

COMPRESSED BLACK 35PT

Rhythm & Reaction

BLACK 30/36PT

'Rhythm & Reaction' gets under the skin of a British love affair with American jazz. *Jazz first came to Britain as a visual and cultural style – rather than as a musical form, writes John L. Walters.*

CONDENSED BLACK 55PT

Rhythm & Reaction

CONDENSED BLACK 50PT

Rhythm & Reaction

CONDENSED BLACK 45PT

Rhythm & Reaction

CONDENSED BLACK 35PT

Rhythm & Reaction

CONDENSED BLACK 30/36PT

‘Rhythm & Reaction’ gets under the skin of a British love affair with American jazz. *Jazz first came to Britain as a visual and cultural style – rather than as a musical form, writes John L. Walters.*

NARROW BLACK 55PT

Rhythm & Reaction

NARROW BLACK 50PT

Rhythm & Reaction

NARROW BLACK 45PT

Rhythm & Reaction

NARROW BLACK 35PT

Rhythm & Reaction

NARROW BLACK 30/36PT

‘Rhythm & Reaction’ gets under the skin of a British love affair with American jazz. *Jazz first came to Britain as a visual and cultural style – rather than as a musical form, writes John L. Walters.*

COMPRESSED EXTRALIGHT 25/30PT

And now I was on my journey, in a pair of *thick boots* and with a *hazel stick* in my hand. Naturally, I was going to London, which lay a hundred miles to the east; and it seemed equally obvious that I

COMPRESSED LIGHT 25/30PT

And now I was on my journey, in a pair of *thick boots* and with a *hazel stick* in my hand. Naturally, I was going to London, which lay a hundred miles to the east; and it seemed equally

COMPRESSED REGULAR 25/30PT

And now I was on my journey, in a pair of *thick boots* and with a *hazel stick* in my hand. Naturally, I was going to London, which lay a hundred miles to the east; and it seemed

COMPRESSED SEMIBOLD 25/30PT

And now I was on my journey, in a pair of *thick boots* and with a *hazel stick* in my hand. Naturally, I was going to London, which lay a hundred miles to the east; and it

COMPRESSED BOLD 25/30PT

And now I was on my journey, in a pair of *thick boots* and with a *hazel stick* in my hand. Naturally, I was going to London, which lay a hundred miles to the

COMPRESSED EXTRABOLD 25/30PT

And now I was on my journey, in a pair of *thick boots* and with a *hazel stick* in my hand. Naturally, I was going to London, which lay a hundred miles to

COMPRESSED BLACK 25/30PT

And now I was on my journey, in a pair of *thick boots* and with a *hazel stick* in my hand. Naturally, I was going to London, which lay

CONDENSED EXTRALIGHT 25/30PT

And now I was on my journey, in a pair of *thick boots* and with a *hazel stick* in my hand. Naturally, I was going to London, which

CONDENSED LIGHT 25/30PT

And now I was on my journey, in a pair of *thick boots* and with a *hazel stick* in my hand. Naturally, I was going to London, which

CONDENSED REGULAR 25/30PT

And now I was on my journey, in a pair of *thick boots* and with a *hazel stick* in my hand. Naturally, I was going to London,

CONDENSED SEMIBOLD 25/30PT

And now I was on my journey, in a pair of *thick boots* and with a *hazel stick* in my hand. Naturally, I was going to

CONDENSED BOLD 25/30PT

And now I was on my journey, in a pair of **thick boots** and with a **hazel stick** in my hand. Naturally, I was going

CONDENSED EXTRABOLD 25/30PT

And now I was on my journey, in a pair of ***thick boots*** and with a ***hazel stick*** in my hand. Naturally, I was going

CONDENSED BLACK 25/30PT

And now I was on my journey, in a pair of ***thick boots*** and with a ***hazel stick*** in my hand. Naturally, I was

NARROW EXTRALIGHT 25/30PT

And now I was on my journey, in a pair of
thick boots and with a *hazel stick* in my hand.

NARROW LIGHT 25/30PT

And now I was on my journey, in a pair of
thick boots and with a *hazel stick* in my hand.

NARROW REGULAR 25/30PT

And now I was on my journey, in a pair of
thick boots and with a *hazel stick* in my hand.

NARROW SEMIBOLD 25/30PT

And now I was on my journey, in a pair of
thick boots and with a *hazel stick* in my hand.

NARROW BOLD 25/30PT

And now I was on my journey, in a pair of
thick boots and with a *hazel stick* in my

NARROW EXTRABOLD 25/30PT

And now I was on my journey, in a pair of
thick boots and with a *hazel stick* in my

NARROW BLACK 25/30PT

And now I was on my journey, in a pair of
thick boots and with a *hazel stick* in my

ALL CAPS

¿Para texto?
1708 A-b [Ende] H@l

¿PARA TEXTO?
1708 A-B [ENDE] H@l

FRACTIONS

1/2 3/4 1/4

½ ¾ ¼

SUPERIOR

H1234

H¹²³⁴

ORDINALS

No.

N^o

HISTORICAL FORMS

That is the question

That if the queftion

STYLISTIC SET O1 (EXTRABOLD & BLACK ONLY)

Gerona & Santiago 369€

Gerona & Santiago 369€

STYLISTIC SET O2 (AMPERSAND)

&

&

TURKISH/AZERI/CRIMEAN TATAR

Kırtasiye, KIRTASIYE

Kırtasiye, KIRTASIYE

ROMANIAN/MOLDAVIAN

Timiș, MULȚUMESC

Timiș, MULȚUMESC

CATALAN

Il·lusió, CAL·LIGRAFIA

Il·lusió, CAL·LIGRAFIA

DUTCH

Bijna, BÍJNA

Bijna, BÍJNA

Lektorat Text

REGULAR 18/22PT

Whenever Henry Wilt took the dog for a walk, or, to be more accurate, *when the dog took him*, or, to be exact, when Mrs Wilt told them both *to go and take themselves out of the house* so that she could do her yoga exercises,

SEMIBOLD 18/22PT

Whenever Henry Wilt took the dog for a walk, or, to be more accurate, *when the dog took him*, or, to be exact, when Mrs Wilt told them both *to go and take themselves out of the house* so that she could do her yoga

BOLD 18/22PT

Whenever Henry Wilt took the dog for a walk, or, to be more accurate, *when the dog took him*, or, to be exact, when Mrs Wilt told them both *to go and take themselves out of the house* so that she could do her

REGULAR 10/13PT

As might have been foreseen, Franconia proved to be an excellent place in which to study the difficult family of *flycatchers*. All our common eastern Massachusetts species were present — the *kingbird*, the *phoebe*, the *wood pewee*, and the *least flycatcher* — and with them the *crested flycatcher* (not common), the *olive-sided*, the *traill*, and the *yellow-bellied*. The phoebe-like cry of the *traill* was to be heard constantly from the hotel piazza. The *yellow-bellied* seemed to be confined to deep and rather swampy woods in the valley, and to

SEMIBOLD 10/13PT

As might have been foreseen, Franconia proved to be an excellent place in which to study the difficult family of *flycatchers*. All our common eastern Massachusetts species were present — the *kingbird*, the *phoebe*, the *wood pewee*, and the *least flycatcher* — and with them the *crested flycatcher* (not common), the *olive-sided*, the *traill*, and the *yellow-bellied*. The *phoebe-like* cry of the *traill* was to be heard constantly from the hotel piazza. The *yellow-bellied* seemed to be confined to deep and rather swampy woods in

BOLD 10/13PT

As might have been foreseen, Franconia proved to be an excellent place in which to study the difficult family of *flycatchers*. All our common eastern Massachusetts species were present — the *kingbird*, the *phoebe*, the *wood pewee*, and the *least flycatcher* — and with them the *crested flycatcher* (not common), the *olive-sided*, the *traill*, and the *yellow-bellied*. The phoebe-like cry of the *traill* was to be heard constantly from the hotel piazza. The *yellow-bellied* seemed to be confined to deep and

REGULAR 12/15PT

As might have been foreseen, Franconia proved to be an excellent place in which to study the difficult family of *flycatchers*. All our common eastern Massachusetts species were present — the *kingbird*, the *phoebe*, the *wood pewee*, and the *least flycatcher* — and with them the *crested flycatcher* (not common), the *olive-sided*, the *traill*, and the *yellow-bellied*. The phoebe-like cry of the *traill*

SEMIBOLD 12/15PT

As might have been foreseen, Franconia proved to be an excellent place in which to study the difficult family of *flycatchers*. All our common eastern Massachusetts species were present — the *kingbird*, the *phoebe*, the *wood pewee*, and the *least flycatcher* — and with them the *crested flycatcher* (not common), the *olive-sided*, the *traill*, and the *yellow-bellied*. The *phoebe-like* cry of the *traill*

BOLD 12/15PT

As might have been foreseen, Franconia proved to be an excellent place in which to study the difficult family of *flycatchers*. All our common eastern Massachusetts species were present — the *kingbird*, the *phoebe*, the *wood pewee*, and the *least flycatcher* — and with them the *crested flycatcher* (not common), the *olive-sided*, the *traill*, and the *yellow-bellied*. The phoebe-like cry

GERMAN 9/11PT

Im speziellen Sinn bezeichnet das Wort Sprache eine bestimmte Einzelsprache wie Deutsch, Japanisch oder Swahili etc. Die gesprochenen Sprachen der Menschheit werden gemäß ihrer genetischen Verwandtschaft in Sprachfamilien gegliedert. Jede einzelne Sprache wird dabei anhand der sogenannten Language Codes nach den ISO-639-Teilnormen international eindeutig klassifiziert. Von den heute rund 6500 gezählten Einzelsprachen – laut

PORTUGUESE 9/11PT

Linguagem pode se referir tanto à capacidade especificamente humana para aquisição e utilização de sistemas complexos de comunicação, quanto a uma instância específica de um sistema de comunicação complexo. O estudo científico da linguagem, em qualquer um de seus sentidos, é chamado linguística. Atualmente, entre 3000 e 6000 línguas são usadas pela espécie humana, e um número muito maior era usado no passado. As línguas

TURKISH 9/11PT

İnsanlar arasındaki anlaşmayı sağlayan bir araç olarak tanımlanabilir. Bu bağlamda dil, kelimelerden oluşan, yani vücut dili gibi sözlü olmayan iletişim biçimlerinin yanı sıra insanların en etkili iletişim şekli olan sözlü iletişimi tanımlar. Dil, ses dalgaları aracılığıyla akustik olarak ve kelimeler aracılığıyla veya işaret dilinde olduğu gibi işaretler aracılığıyla görsel olarak aktarılır (“İşaret dili” ile karşılaştırınız). Ayrıca dokunma vasıtasıyla dokunsal işaretlerle

ICELANDIC 9/11PT

Mál er kerfi merkja, tákna, hljóða og orða sem notuð eru saman til þess að lýsa hugtökum, hugmyndum, merkingum og hugsunum. Málfræðingar eru þeir sem að rannsaka mál, en í nútímanum var málfræði fyrst kynnt sem vísindagrein af Ferdinand de Saussure. Þeir sem að tala mál, eða nota það á annan hátt, eru taldir með sem hluti af málsamfélagi þess máls. Tungumál er hugtak sérstaklega notað um þau mál sem að hafa

FRENCH 9/11PT

Les gestes sont la méthode de communication la plus connue, utilisée par diverses espèces dont l'ensemble des primates. C'est également le cas des abeilles et leurs danses : lorsqu'une abeille exploratrice revient vers sa ruche après avoir trouvé une source de nectar, elle peut effectuer une danse en rond indiquant que cette source se situe à moins de 50 mètres, ou une danse en huit indiquant que cette source est plus lointaine. De

NORWEGIAN 9/11PT

Et språk er et dynamisk sett av synlige, hørbare eller følbare symboler for kommunikasjon og elementer som brukes for å manipulere dem. Språk kan også henvisse til bruken av slike systemer som et generelt fenomen. Eksempler på språk er naturlig språk (menneskelige enkeltspråk, for eksempel norsk), kunstige språk (for eksempel esperanto) og programmeringsspråk (for eksempel Java). Menneskespråk omtales vanligvis som naturlige språk, og

SWEDISH 9/11PT

Språk eller tungomål är en del av olika system för kommunikation, som används av människor och som vi börjar tillägna stora bitar av redan under våra första levnadsår. Barn lär sig använda språk lika naturligt, som de lär sig att gå. Språket kommuniceras exempelvis via talat språk, teckenspråk, kognitioner och skrift, som är bärare av språk i en rad olika kommunikationssystem. Begreppet språk har två nära sammanbundna men ändå separa-

SPANISH 9/11PT

Un lenguaje (del provenzal linguatge y del latín lingua) es un sistema de comunicación estructurado para el que existe un contexto de uso y ciertos principios combinatorios formales. Existen contextos tanto naturales como artificiales. Desde un punto de vista más amplio, el lenguaje indica una característica común a los humanos y a otros animales (animales no simbólicos) para expresar sus experiencias y comunicarlas a otros mediante el

CZECH 9/11PT

Vědecký obor zabývající se zkoumáním jazyka se nazývá lingvistika. Otázky týkající se filosofie jazyka byly pokládány již ve starověkém Řecku, byly zde otázky typu zda mohou slova reprezentovat zkušenost nebo motivovanost obsahu slov, konkrétními památkami jsou například Platónovy dialogy Gorgias a Faidros. Ještě časnějším dokladem uvažování o jazyku jsou gramatiky sanskrty, nejranější záznamy o kodifikaci liturgického jazyka a

ITALIAN 9/11PT

Il linguaggio, in linguistica, è il complesso definito di suoni, gesti e movimenti attraverso il quale si attiva un processo di comunicazione. La facoltà di rappresentare mentalmente un significato è presente in molte specie di animali, tra le quali l'essere umano. La capacità di elaborare e produrre un linguaggio verbale, nell'uomo, si è sviluppata a seguito di mutamenti strutturali della cavità orale. In particolare l'arretramento dell'ugola ha reso

POLISH 9/11PT

Język służy do przedstawiania rzeczywistości dotyczącej przedmiotów, czynności czy abstrakcyjnych pojęć za pomocą znaków. Zbiór znaków w języku jest otwarty. Wynika to z faktu, że znakiem językowym jest każdy tekst, każda sformułowana wypowiedź, posiadająca znaczenie. Jednostka posługująca się językiem może więc za pomocą jego systemu stworzyć nieskończoną liczbę nowych znaków, także takich, z którymi nigdy się wcześniej nie ze-

FINNISH 9/11PT

Kieli on järjestelmä, jossa ihmisen ilmaisee ajatuksensa kielellisillä merkeillä, abstraktioilla. Näitä merkkejä nimitetään kielellisiksi ilmauksiksi. Puhutuissa kielissä kuuluva (auditiivisia) merkkejä tuotetaan puhe-elimillä. Kirjoitetussa kielessä kielelliset ilmaukset on tehty silmin nähtäviksi eli luettaviksi. Viitotuissa kielissä kielelliset ilmaukset ovat visuaalisia, eivätkä auditiivisia. Eri kieliä tutkii kielitiede. Kognitiotiede tutkii kieltä hieman

SMALL CAPS

¿Para texto?
1708 A–b [Ende] H@I

¿PARA TEXTO?
1708 A–B [ENDE] H@I

ALL SMALL CAPS

¿Para texto?
1708 A–b [Ende] H@I

¿PARA TEXTO?
1708 A–B [ENDE] H@I

ALL CAPS

¿Para texto?
1708 A–b [Ende] H@I

¿PARA TEXTO?
1708 A–B [ENDE] H@I

PROPORTIONAL OLDSTYLE FIGURES

0123456789\$€¢£¥¦%‰

0123456789\$€¢£¥¦%‰

PROPORTIONAL LINING FIGURES (DEFAULT)

0123456789\$€¢£¥¦%‰

0123456789\$€¢£¥¦%‰

TABULAR OLDSTYLE & SLASHED ZERO

00123456789\$€¢£¥¦

00123456789\$€¢£¥¦

TABULAR LINING & SLASHED ZERO

00123456789\$€¢£¥¦

00123456789\$€¢£¥¦

NUMERATOR/DENOMINATOR

345(x+y)/678 89/120

345(x+y)/678 89/120

FRACTIONS

1/2 3/4 1/46 5/7 2/98

½ ¾ ¼₆ ⅕₇ ⅔₈

SUPERIOR/INFERIOR

H₂O x_{b8} y³⁺⁵ a_lndex

H₂O x_{b8} y³⁺⁵ a_lndex

ORDINALS

1st 2nd 3rd 85th 2^e Ma No.

1st 2nd 3rd 85th 2^e M^a N^o

HISTORICAL FORMS

That is the question

That if the queftion

STYLISTIC SET 01 (ALTERNATE A)

ágata

ágata

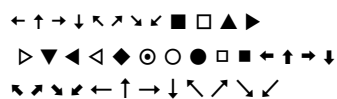
STYLISTIC SET 02 (ALTERNATE K)

Kırsis Kiosk

Kırsis, Kiosk

STYLISTIC SET 03 (SYMBOLS)

A B C D E F G H I J K L
 M N O P Q R S T U V W X Y Z
 a b c d e f g h i j k l



TURKISH/AZERI/CRIMEAN TATAR

Kirtasiye, KIRTASIYE, KIRTASIYE

Kirtasiye, KIRTASIYE, KIRTASIYE

ROMANIAN/MOLDAVIAN

Timiș, BUCUREȘTI, MULȚUMESC

Timiș, BUCUREȘTI, MULȚUMESC

CATALAN

Il·lusió, COL·LABORA, CAL·LIGRAFIA

IlHusió, COLLABORA, CAL·LIGRAFIA

DUTCH

Bíjna, víJF, BÍJNA

Bíjna, víJF, BÍJNA,

CONTEXTUAL ALTERNATES

gj gg əj

gj gg əj

SUPPORTED LATIN LANGUAGES

Abenaki, Afaan Oromo, Afar, Afrikaans, Albanian, Alsatian, Amis, Anuta, Aragonese, Aranese, Aromanian, Arrernte, Arvanitic (Latin), Asturian, Atayal, Aymara, Bashkir (Latin), Basque, Belarusian (Latin), Bemba, Bikol, Bislama, Bosnian, Breton, Cape Verdean Creole, Catalan, Cebuano, Chamorro, Chavacano, Chichewa, Chickasaw, Cimbrian, Cofán, Cornish, Corsican, Creek, Crimean Tatar (Latin), Croatian, Czech, Danish, Dawan, Delaware, Dholuo, Drehu, Dutch, English, Esperanto, Estonian, Faroese, Fijian, Filipino, Finnish, Folkspraak, French, Frisian, Friulian, Gagauz (Latin), Galician, Ganda, Genoese, German, Gikuyu, Gooniyandi, Greenlandic (Kalaallisut), Guadeloupean Creole, Gwich'in, Haitian Creole, Hän, Hawaiian, Hiligaynon, Hopi, Hotçak (Latin), Hungarian, Icelandic, Ido, Ilocano, Indonesian, Interglossa, Interlingua, Irish, Istro-Romanian, Italian, Jamaican, Javanese (Latin), Jèrriais, Kala Lagaw Ya, Kapampangan (Latin), Kaqchikel, Karakalpak (Latin), Karelian (Latin), Kashubian, Kikongo, Kinyarwanda, Kiribati, Kirundi, Kurdish (Latin), Ladin, Latin, Latvian, Lithuanian, Lojban, Lombard, Low Saxon, Luxembourgish, Maasai, Makhuwa, Malay, Maltese, Manx, Māori, Marquesan, Megleno-Romanian, Meriam Mir, Mirandese, Mohawk, Moldovan, Montagnais, Montenegrin, Murrinh-Patha, Nagamese Creole, Ndebele, Neapolitan, Ngiyambaa, Niuean, Noongar, Norwegian, Novial, Occidental, Occitan, Oshiwambo, Ossetian (Latin), Palauan, Papiamentu, Piedmontese, Polish, Portuguese, Potawatomi, Q'eqchi', Quechua, Rarotongan, Romanian, Romansh, Rotokas, Sami, Sango, Saramaccan, Sardinian, Scottish Gaelic, Serbian (Latin), Seri, Seychellois Creole, Shawnee, Shona, Sicilian, Silesian, Slovak, Slovenian, Slovio (Latin), Somali, Sorbian, Sotho (Northern), Sotho (Southern), Spanish, Sranan, Sundanese (Latin), Swahili, Swazi, Swedish, Tagalog, Tahitian, Tetum, Tok Pisin, Tokelauan, Tongan, Tshiluba, Tsonga, Tswana, Tumbuka, Turkish, Turkmen (Latin), Tuvaluan, Tzotzil, Uzbek (Latin), Venetian, Vepsian, Volapük, Vöro, Wallisian, Walloon, Waray-Waray, Warlpiri, Wayuu, Welsh, Wik-Mungkan, Wiradjuri, Wolof, Xavante, Xhosa, Yapese, Yindjibarndi, Zapotec, Zulu, Zuni, ...

EXTENDED TYPOGRAPHIC FEATURES

All caps, basic ligatures, case-sensitive forms, class kerning, contextual alternates, discretionary ligatures, denominators & numerators, fractions, alternative fractions, historical forms, 5 sets of figures (oldstyle numerals, lining figures, proportional figures, tabular figures and small caps), localised forms, ordinals, ornaments, small capitals, small capitals from capitals, stylistic sets (SS01, SS02, SS03, etc), superiors & inferiors, slashed zero, ...

THE DESIGNERS

Florian Fecher is a type and graphic designer living in both Germany and France. He has had a long-lasting fascination for what can be subsumed under the marvellous German word 'Schrift'. Though missing from the English vocabulary, it functions amongst others as an umbrella term referring to composed characters implemented by writing, calligraphy, lettering, and typography. This interest propelled his communication design studies at the FH Würzburg in Germany. Subsequently, instead of pursuing a master's degree in typeface design, he completed the post-diploma programme EsadType at the ésad Amiens in France.

Florian's resulting project, Redaktion, was renamed Lektorat upon graduation and is the recipient of TypeTogether's 2019 Gerard Unger Scholarship.

CREDITS

Lead design and concept

Florian Fecher

Supervisors

Veronika Burian

José Scaglione

Engineering

Joancarles Casasín

Florian Fecher

Quality assurance

Azza Alameddine

Kerning

Florian Fecher

Graphic design

Elena Veguillas

Roxane Gataud

Copywriting

Joshua Farmer

AWARDS

-Gerard Unger Scholarship winner 2019

FAMILY UPGRADES

Buy a single weight (or more) now and get reimbursed if you buy the entire font bundle at a later time. This is a great way to explore a new typeface without full commitment. To take advantage of the upgrade, please email info@type-together.com.

CUSTOM WORK

We offer custom font solutions tailored to your needs. This includes developing new typefaces from scratch, modifying existing typefaces, extending language support, and creating logotypes. Please contact us for details at info@type-together.com.

LICENSING

Our complete font catalogue, along with the presented type family here, are available for print, self-hosted web applications, and app embedding from TypeTogether's online store. For other types of licences and more information, please contact us at info@type-together.com.

TESTING OUR FONTS

TypeTogether actively seeks ongoing dialogue with all type users and therefore offers free temporary licences to test any of our typefaces. The test fonts are fully functional and include the entire character set and OpenType features. To request test fonts, please contact us at info@type-together.com.

EDUCATIONAL & CHARITY DISCOUNT

TypeTogether offers a 25% discount on all typeface purchases for students and those in education (schools, departments, etc.). This discount also extends to NGOs and charities in general. Please contact us for details at info@type-together.com.

For further information, samples, and ordering, please visit www.type-together.com.

LEKTORAT

Design: Florian Fecher
www.type-together.com/lektorat-font
©TypeTogether 2020
Lektorat is a registered trademark of TypeTogether.
All rights reserved.

TEXT CREDITS

As I walked out one midsummer morning,
by Laurie Lee (London, 1969).
Wilt, by Tom Sharpe (1976).
Foot-path way, by Bradford Torrey (Boston, 1892).
Nineteen Eighty-Four, by George Orwell (1949).
'Rhythm & Reaction' gets under the skin of a British love affair with American jazz, in *Eye Magazine* blog.
Wikipedia.org.

ABOUT THIS SPECIMEN

This specimen has been set using Ebony Light and Ebony Bold. If you print this specimen, please be kind to the environment and consider printing only the pages you need.